



NORTENT  
NORWAY

# GAMME 6 PC

☐☐ **THE EXCEPTIONALLY GOOD  
FEELING OF BEING FREE  
TOGETHER WITH NATURE. THIS  
IS WHAT NORTENT IS ALL  
ABOUT.** ☐☐



## **GAMME 6 PC**

Gamme 6 PC has a very strong construction that can withstand severe weather conditions and heavy snow-load. A "cabin" to carry in the bag. Our inspiration for this tent comes from an ancient Norwegian form of a hut. The Gamme has been used since the first people came to Norway thousands of years ago, providing a safe and secure shelter. It is still used today by indigenous Sami people of Norway.



Gamme 6 PC is designed around a stove. We believe having a warm and pleasant environment inside the tent enhances the complete outdoor experience.

# WEATHERING



Most tent fabrics need some kind of waterproof coating to make it waterproof. But with polycotton much of the "waterproofing" work is done by the fiber itself. A cotton canvas is not completely waterproof from the factory. It needs to be exposed to water so that the fibers in the fabric expand and thus make the fabric 100% waterproof. Be it from exposure to rain or water from a garden hose, this process is called weathering. This also applies to the thread in the seams.



# WATERPROOFNESS

A white dome tent with red trim is pitched on a grassy hillside. The background features a dense forest of evergreen and deciduous trees, with snow-dusted mountains in the distance under a clear blue sky.

With this in mind it may be good to know that it is normal with a few drops of water coming through the fabric during the first rain showers. The fabric will become denser after each time and eventually become completely waterproof. It is the internal fibers in the tent fabric that are making the fabric completely waterproof. With proper care and storage the tent will maintain its waterproof properties for many years to come with no extra maintenance to waterproofing.

# TAKING CARE OF YOUR TENT

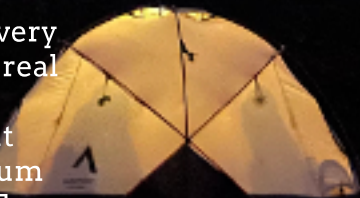
A black tent is pitched in a snowy landscape at sunset. The tent is the central focus, with its poles and guy lines visible. The ground is covered in snow, and the background shows a range of mountains under a colorful sky transitioning from orange to blue. A tripod and other gear are visible in the foreground on the right.

It's important to make sure your tent is completely dry before storing it. Moisture can cause mold and mildew to grow, which can weaken the fabric and cause unpleasant odors. Set it up in a well-ventilated area to dry before storing it in its carrying bag.

Always store your tent in a cool, dry place, away from direct sunlight or heat sources. Avoid storing it in a damp or humid area.

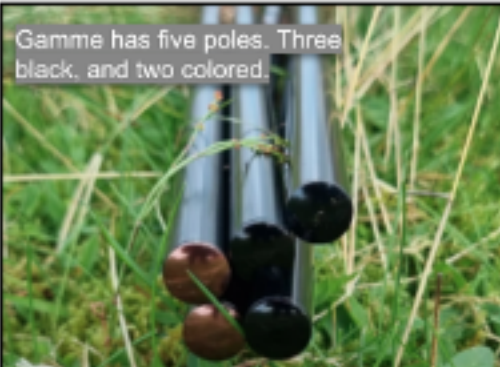
All our tents are treated with UV protection to help protect the fabric from UV rays..But it is still important to keep the tent out of direct sunlight as much as possible. Use a shaded area, or use a tarp or other shading device to protect it from the sun.

# PITCHING YOUR GAMME 6 PG



Our tent poles are of high quality and are very flexible and strong. They are tested in the real world under high stress for optimal and correct understanding of its durability. But nevertheless they are lightweight aluminum and could break if not handled correctly. For best use, strength and durability of your pole, ensure that each section is properly inserted into place, and ensure that pole sections do not pull apart during pitching, as the resulting gaps can lead to breakage.

Gamme has five poles. Three black, and two colored.



Start with one of the black poles.



Insert it into the longest sleeve.



Attach it to the corresponding black cups



Identify the strap in the middle of one of the entrances. Stake it!



Identify the strap on the opposite side of the tent. Stretch the tent to an upward position.



Stake the strap temporary.



Prepare one of the two colored poles.



Insert it into one of the colored cups.



Find the second corresponding colored cup. Insert the pole.



Insert the second colored pole into the two remaining colored cups.



Attach the clips to the two poles.



Now. Lower the tent.



It will help you to insert the two remaining black poles.



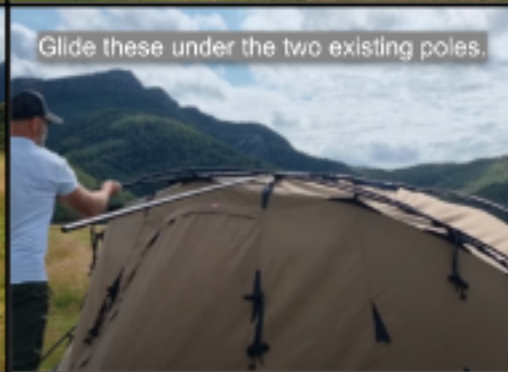
Prepare the two remaining black poles.



Insert them into the two short sleeves.



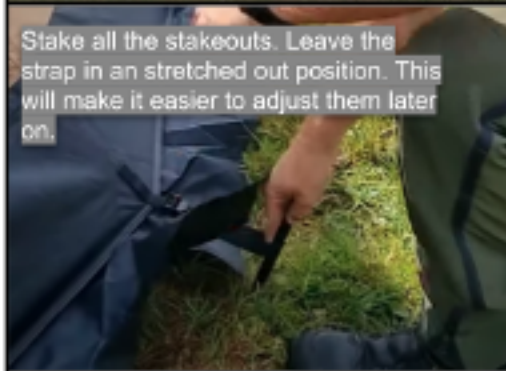
Glide these under the two existing poles.



Then. Raise the tent by reinserting the black pole from the long sleeve into the corresponding cup.

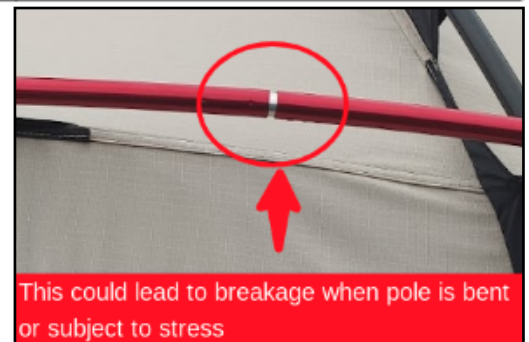






## Important note about pole usage.

Our tent poles are of high quality and are very flexible and strong. They are tested in the real world under high stress for optimal and correct understanding of its durability. But nevertheless they are lightweight aluminum and could break if not handled correctly. For best use, strength and durability of your pole, ensure that each section is properly inserted into place, and ensure that pole sections do not pull apart during pitching, as the resulting gaps can lead to breakage.



A glowing orange tent is pitched in a snowy forest at night. The tent is illuminated from within, casting a warm light that contrasts with the cool blue tones of the night sky and the dark silhouettes of the trees. The ground is covered in snow, and the trees are tall and thin, typical of a boreal forest. The overall atmosphere is serene and cozy.

**NORTENT AS**

Norway

[info@nortent.com](mailto:info@nortent.com)

[www.nortent.com](http://www.nortent.com)

 Instagram

 facebook